

## Awarded Project Summaries



### **Town of Brandon CLG: Historic Survey for the Town of Brandon, \$7,200**

Grant funding will be used to hire a qualified consultant to undertake an overall survey of the important historical areas, industries, and people associated with Brandon. This study will focus on areas outside the identified historic districts and integrate the current information into a cohesive historical perspective. The final product will be a Survey Report summarizing the results of the project; an individual survey form for each property; photographs of each property surveyed; and maps showing the location of each property within the town.



### **Town of Hartford CLG: Taft's Flat National Register Nominations, \$11,300**

Grant funding will be used to hire a qualified consultant to review the 2021 Intensive Level Survey for Taft's Flat, apply the National Register criteria, propose which districts should be nominated to the National Register, and complete the nominations. Taft's Flat is a plateau between White River Junction and Wilder Village through which Route 5 passes. From 1879 to 1892, owner Orrin Taft sold off several parcels of land, spurring development of the area that continued through the 1960s. It contains six distinct subdivisions that date from the 1920s-1960s. The final product will be a report summarizing the review of the 2021 Intensive Level Survey, with recommendations for which subdivisions to nominate to the National Register.



### **City of Montpelier CLG: Montpelier Historic Resources Scoping Study, \$7,200**

Grant funding will be used to hire a consultant to research and document the extent of Montpelier's historic resources throughout the city. With this information, the Montpelier CLG will have a full understanding of the city's historic resources and can develop a systematic approach to documenting individual properties and historic districts. Such resources include outbuildings and buildings known to be a part of the Civil War hospital in the College Hill area, as well as buildings within the area known as the "Meadow" adjacent to Route 12/Elm Street as it heads North out of the city. The final product will be a report summarizing the results of the research, including recommendations for State and National Register-eligible properties and districts.



### **Town of Norwich CLG: Jones Circle Historic District National Register Nomination, \$7,500**

Grant funding will be used to hire a consultant research and write a National Register nomination for the Jones Circle neighborhood, a compact residential development constructed in the 1950s-1960s by the National Homes Corporation. Based in Lafayette, IN, National Homes was a manufacturer of prefabricated houses. These houses were built in large sections, trucked to the desired site, and assembled. The 2015/16 Norwich windshield survey states that Jones Circle "not only is significant as a collection of this property type and suburban Colonial Revival style with great integrity, but is a good example of discrete infill in a historic town center during the 20th century residential expansion Norwich experienced." The final product will be a National Register nomination for the Jones Circle Historic District.



### **Town of Rockingham CLG: CLG Program Support, Interpretation, and Historic Stewardship, \$13,012**

Grant funding will be used to support the Rockingham CLG Coordinator position, which oversees the operations of the Rockingham Historic Preservation Commission and manages ongoing activities such as the Speakers Program, Historic Homes Workshops, Historic Preservation Public Awareness Programs, and Old House Awards. In addition, the CLG Coordinator is managing the Rockingham Meeting House Preservation Project. The final product will be a report on the activities and accomplishments of the CLG Coordinator and Commission, and the successful implementation of local CLG program activities.

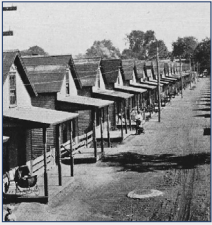
## Awarded Project Summaries



### **Town of Stowe CLG: Moscow Mill Revitalization, \$8,100**

#### **Third-Party Administrator: Stowe Electric Department**

Grant funding will be used to hire an architect to prepare architectural drawings and site specifications for the next stage of revitalizing the Seaver Sawmill in the Moscow Village Historic District. Built in 1822, the Seaver Sawmill is a contributing resource in the Moscow Village Historic District. A micro-generation hydropower site is planned for the mill, and the building is to be rehabilitated as part of the project. The final product will be architectural drawings of the building as it stands today, with proposed improvements.



### **Town of Windsor: Publication of *Windsor's Warsaw: The History of a Workers' Neighborhood*, \$2,593**

Grant funding will be used to support the publication of 100-150 hard copies of a new book about the Warsaw neighborhood, a group of company-built houses on the Connecticut River floodplain just east of the 1909 Windsor Machine Company factory. Between the fall of 1916 and 1919 National Acme built a road network lined with 67 small, single-family dwellings, 13 two-family houses, and three tenement buildings. Windsor's Warsaw was researched and written by local historian Kathryn Grover. The final product will be the publication of the completed book.

